

## *MET-U1A*

# Ultrasonic Portable Hardness Tester

OPERATIONAL MANUAL



**BMS Bulut Makina Sanayi ve Ticaret Ltd. Şti.**

Kocaeli KOBİ Organize Sanayi Bölgesi  
Köseler Mahallesi, 6.Cadde No: 20/2 Dilovası / KOCAELİ / TURKEY  
Phone: +90 262 502 97 73-76 / +90 262 503 06 51  
Web: [www.bulutmak.com](http://www.bulutmak.com) e-mail: [bms@bulutmak.com](mailto:bms@bulutmak.com)

1	PURPOSE AND APPLICATION.....	4
2	GENERAL RECOMMENDATIONS.....	4
3	SPECIFICATIONS (TECHNICAL DATA).....	5
4	COMPLETE SET OF EQUIPMENT .....	7
	4.1 Basic Complete set (included in the cost of hardness tester).....	7
5	ADDITIONAL ITEMS (for additional payment).....	7
6	ADDITIONAL ITEMS (for additional payment).....	7
7	DESIGN AND OPERATION PRINCIPLES.....	8
8	OPERATION PROCEDURE .....	11
	8.1 Preparing for operation. ....	11
	8.2 VISUAL INSPECTION.....	11
	8.3 TESTED ARTICLE PREPARATION.....	11
9	PROBE CONNECTION.....	11
10	OPERATION PROCEDURE .....	11
	10.1 Preparing for operation.....	11
	10.2 VISUAL INSPECTION .....	11
	10.2.1 TESTED ARTICLE PREPARATION.....	11
	10.2.2 PROBE CONNECTION.....	12
	10.3 POWER UP.....	12
	10.4 POWER DOWN .....	12
	10.5 DISPLAY LIGHTING.....	12
11	OPERATION WITH ELECTRONIC MODULE .....	12
	11.1 BEGINNING OF WORK .....	12
	11.2 SCALE SELECTION .....	12
	11.3 POWER UP.....	13
	11.4 POWER DOWN .....	13
	11.5 DISPLAY LIGHTING.....	13
12	OPERATION WITH ELECTRONIC MODULE .....	13
	12.1 BEGINNING OF WORK .....	13
	12.2 SCALE SELECTION .....	13
	12.2.1 OPERATING MODE SELECTION.....	13
	12.2.2 OPERATION CANCELING.....	13
	12.2.3 “TESTING” MODE.....	13
	12.2.4 “ARCHIVE” OPERATION.....	13
	12.2.5 Conversion of the measured value from one hardness scale into another .....	14
13	MEASUREMENT AND RECORDING” OPERATION.....	14
	13.1 “CALIBRATION” MODE.....	15
	13.2 Examples.....	15
	13.3 CALIBRATION OPERATION .....	15
	13.4 CLEAR CALIBRATION OPERATION .....	16
	13.5 PROCESSING MODE.....	16
	13.6 MEAN VALUE OPERATION .....	16
	13.7 CLEAR ARCHIVE OPERATION.....	17
	13.7.1 CONNECTION WITH COMPUTER.....	17
	13.7.2 Operation procedure.....	17
14	OPERATION WITH PROBE (sensing transducer).....	17
	14.1 U1 ULTRASONIC PROBE.....	17
15	THE FIRST MEASUREMENT.....	17
	15.1 EXPERIMENTAL MEASUREMENT .....	18
	15.1.1 ACQUIRING SOME EXPERIENCE OF WORKING WITH THE PROBE.....	18
	15.1.2 D1 DYNAMIC PROBE.....	18
	15.1.3 THE FIRST MEASUREMENT.....	18
	15.1.4 EXPERIMENTAL MEASUREMENT.....	18
	15.1.5 ACQUIRING SOME EXPERIENCE OF WORKING WITH THE PROBE.....	18
	15.2 D1 DYNAMIC PROBE .....	19
	15.3 THE FIRST MEASUREMENT .....	19
	15.4 EXPERIMENTAL MEASUREMENT .....	19
	15.4.1 ACQUIRING SOME EXPERIENCE OF WORKING WITH THE PROBE.....	19
16	TECHNICAL MAINTENANCE, SPECIAL CONDITIONS OF OPERATION .....	19
	16.1 PROBE MAINTENANCE.....	19
	16.2 ELECTRONIC MODULE MAINTENANCE.....	19

16.3	BATTERY MAINTENANCE .....	19
16.4	STORAGE .....	19
16.5	TRANSPORTATION .....	20
16.6	PUTTING INTO OPERATION AFTER STORAGE AND TRANSPORTATION .....	20
16.7	SPECIAL OPERATING CONDITIONS .....	20
17	PRECAUTIONS AND TROUBLESHOOTING .....	20
18	MANUFACTURER'S WARRANTY AND SERVICE MAINTENANCE .....	20

## 1 PURPOSE AND APPLICATION

Portable hardness tester (here in after referred to as the “hardness tester”) is designed to measure hardness of metals and alloys. There are 8 independent hardness scales in the hardness tester. Prior to delivery, the manufacturer carries out the preliminary calibration of hardness tester on 4 scales, Rockwell (HRC), Brinell (HB), Vickers (HV) and Shore (HSD). Every scale in the hardness tester is calibrated on reference test blocks (i.e. conversion tables are not used) graduated on the National Hardness Standards (Scientific Research Institute for Physical-Technical and Radio-Technical Measurements (VNIIFTRI) which is the main metrological institute of Russia in the field of hardness measurements, and which keeps and maintains the state hardness primary standard machines on Rockwell and Super-Rockwell (GET 30-94), Brinell (GET 33-85), Vickers (GET 31-06) and Shore D (GET 161-04) scales.), which provides for the highest calibration level. Verification Certificate of the federal approved form is attached to every hardness tester.

In the hardness tester, there is also a tensile strength (Rm) scale which, in compliance with GOST 22791-77, enables to define tensile strength of carbon steel of pearlitic class by automatic recalculation from Brinell hardness (HB) scale.

In the hardness tester, three additional scales (H1, H2, and H3) are provided which make it possible:

to conduct hardness test on other scales (E.g., Rockwell B (HRB), Super Rockwell (HRN and HRT));

to conduct hardness test on Leeb (HL) scale (instead of H1 scale) during the measurement by dynamic and combined hardness testers.

to conduct hardness tests of metals which are significantly different by their properties from steel (iron, aluminum, copper alloys etc.),

*To calibrate hardness tester, the user should dive not less than 3 samples of the tested article material with different hardness (minimum, maximum and average).*

Hardness tester calibration on the additional (H1, H2, H3) hardness scales can be made by the manufacturer (according to the order, the service is free of charge) and the information about it will be in the Technical Reference and Operational Manual. The user can make the calibration on additional hardness scales independently by himself following the instruction of the present Technical Reference

Hardness tester is equipped with microprocessor which enables to:

Delete the measured hardness number in case of doubt in the correctness of the measurement;

Compute the average value of a series of the conducted measurements;

Save the data in the non-volatile memory when hardness tester is switched off;

Compute the average value from the data saved in the non-volatile memory;

Transfer data from hardness tester non-volatile memory to the computer for further printing out and diagramming;

The hardness tester enables to conduct hardness testing of a metal surface layer which was fused, sprayed, mechanically or thermally or otherwise treated.

Such hardness control is impossible in case of fixed hardness testers which force through a superficial layer under big loads.

When hardness tester is used, the thickness of metal tested surface shall, at least, be ten times more than the depth of the probe penetration

Hardness tester is designed for non-destructive hardness control of large-sized equipment and hard-to-reach places.

Such hardness control is not accessible for fixed hardness testers due to their technical and design limitations.

Portable hardness testers in comparison with fixed hardness testers are characterized by a higher productivity, the time of one measurement is 5 to 10 times less.

The hardness tester enables to conduct a quick test of a metal product hardness on site in the process of operation or manufacturing, under the field or laboratory conditions in the sphere of mechanical engineering, metallurgy, power generation, ship building and railroad transport, in aviation and space industry, in oil and gas sector, in maintenance and service companies etc. Pressure vessels of various purpose (reactors, steam generators, collectors, boiler drums, gas holders etc.), turbine and generator rotors, pipelines, rolls, crankshafts, gears, parts of various vehicles, industrial prefabricates articles (castings, forgings, sheets and plates) etc., (MI 2565-99 recommendations, “State System for Ensuring of Uniform Measurement”). Field of application of hardness testing devices, which are subject to verification”).

The hardness tester can be applied for:

Assessment of technological processes stability (equipment treatment, welding etc.);

Diagnostics of equipment with the purpose of assessment of its remaining safe life (hardness control of pipelines, boilers etc.).

## 2 GENERAL RECOMMENDATIONS

The thorough study of the present Technical Reference and Operation Manual is a mandatory condition for the hardness tester application! Only in this case you can use all hardness tester opportunities and avoid such actions and errors which are likely to lead to wrong test results. Read the present Technical Reference and Operation Manual carefully and only after that start examining the hardness tester.

Operator’s training requires sufficient knowledge in the field of metal hardness measurement and metrology on the whole.

In the process of the hardness tester operation, there is always a set of external factors influencing the test accuracy:  
The condition of the tested article surface (surface stress, contamination, various coatings;  
Ambient parameters (humidity, temperature, pollution etc.);  
Homogeneity of the tested article material

The tested surface and the tested article as such shall correspond to the parameters given in the hardness tester specifications and be prepared in the due form Otherwise, the correct results obtaining is not guaranteed. The highest accuracy of the results is obtained in the process of testing conducted under the conditions listed below:

Ambient temperature is 5 .... 45eC

Relative humidity is 30 ...80%;

Atmospheric pressure is 84 ... 106 kPa.

In the process of hardness tester operation, no impact or vibration on it is allowed. Careful operation and observation of all technical instructions hereof is the condition for its reliable operation without maintenance for quite a long period of time.

### 3 SPECIFICATIONS (TECHNICAL DATA)

Scale	Measurement range	Error, not more than
«C» Rockwell	20-67 HRC	± 1, 5 HRC
Brinell	75-650 HB	± 10 HB
Vickers	75-999 HV	± 12 HV
Shore	23-102 HSD	± 2 HSD

Connection with the computer via USB port, diagramming and printing the data out	Available
Measurements results processing, their averaging, recording and archival data processing in the hardness tester memory	Available
Non-volatile memory – data saving in archive when hardness tester is switched off	Available
Character LCD display: simultaneously displays a hardness scale, operating mode, archive number and discharge level indication	Available
LCD display lighting	Available
Sound signal at the end of measurement	Available
The function of conversion from one hardness scale into another	Available
Protective code excluding the possibility of an accidental hardness tester calibration reset	
Hardness tester spatial position during measurements, no angle correction is needed	
Number of current measurements for average value determination	1 – 99
Time of uninterrupted operation with fully charged battery, at t = 15-20 °C, not less than, hours:	
• without lighting	20
• with lighting	5
• from AC mains	UNLIMITED
Battery (NiMH, C size) charging full time, hours	10
Hardness tester power supply:	90-240V
• AC mains, V/Hz	50-60Hz
• battery, V	1,2
• consumed power, not more than, V-A	1,5
Automatic power supply switch off, time, sec	150
Temperature range, °C:	
• during operation	-5 ... +45
• during storage and transportation	-15 ... +65
Relative humidity, %	30 ... 80
Precious metals and stones	
• silver, mg	16,8
• diamond (U1 ultrasonic probe), carat	0,07
Overall dimensions (length/width/height), mm	
• ultrasonic probe	145/80/40
• ultrasonic short probe	180/80/42
• dynamic probe	160/25
• short dynamic probe	140/25
Mass ( electronic module in plastic body [in alum. body]), kg:	
• module + ultrasonic probe	0,36 <0,65>
• module + dynamic probe	0,31 <0,60>
• as a complete set (gross)	1,0 <1,30>
The number of testing result in the memory(archive)of the module forevery hardness tester probe	
• For ultrasonic probe	100
• For dynamic probe	100
Time for one hardness testing, sec.	
• ultrasonic probe	4
• dynamic probe	2
Tested surface roughness, Ra	
• ultrasonic probe,	2,5
• dynamic probe	3,2
Tested surface radius of curvature, mm	
• ultrasonic probe	5
• dynamic probe	10
Tested article mass, not less than, kg	
• ultrasonic probe	0,01
• dynamic probe	3
Tested article thickness, not less than, mm	
• ultrasonic probe	1
• dynamic probe	12
Size of indentation on the tested article surface with 45 HRC hardness, μm	
• ultrasonic probe	70
• dynamic probe	700
Depth of indentation into a tested article with 45 HRC hardness, μm	30

<ul style="list-style-type: none"> <li>ultrasonic probe diamond pyramid</li> <li>dynamic probe hard alloy ball</li> </ul>	300
Probe resource (minimum number of testing):	
<ul style="list-style-type: none"> <li>ultrasonic probe</li> <li>dynamic probe</li> </ul>	200000 50000
Pressure force on ultrasonic probe, not less than, H	14,7

#### 4 COMPLETE SET OF EQUIPMENT

##### 4.1 Basic Complete set (included in the cost of hardness tester)

Name	Q-ty, pcs.
Aluminum body	1
Case for hardness tester	1
Ultrasonic probe and connecting cable	1
Battery charger, and connecting cable unit	1
Operation Manual	1

#### 5 ADDITIONAL ITEMS (for additional payment)

Reference hardness testing blocks (GOST 9031-75; 8.426-81) verified at FGUP “VNIIF- TRI” for hardness tester readings verification and calibration by user.

Support to the ultrasonic probe U1 – for conducting of measurements of small articles with reliable fixing. Adjustable altitude of installation. Provides stable force, perpendicularity to a measured surface, the smooth loading of the probe (sensing transducer) and expels possibility of its oscillations and movements on an article surface. We urgently recommend to use a sup- port for measurement of products and articles with thickness of a wall less than 2 mm.

Grinding adhesive greasing. The dynamic probe (sensing transducer): for placing of hardness blocks and small weight articles to the surface plate (GOST 10905-86). The Ultrasonic probe: for placing of products thinner than 1 mm on the support bedplate.

The grinding machine on batteries – for preparation of a zone of measurement on a surface of a controllable product, decrease of roughness, de-scaling, removing of rust, corrosion, riveting work and machining of welded joints.

Complete set of replaceable nozzles and caps to the ultrasonic probe (sensing transducer)

U1 – for conducting of measurements of articles of cylindrical and spherical form. Conductor.

The short ultrasonic probe U1, the short dynamic probe D1 – for conducting of measurements in the constrained conditions of the restricted space (measurement in pipes, sleeves, spigots etc.).

#### 6 ADDITIONAL ITEMS (for additional payment)

- Reference hardness testing blocks (GOST 9031-75; 8.426-81) verified at FGUP “VNIIF- TRI” for hardness tester readings verification and calibration by user.

Support to the ultrasonic probe U1 – for conducting of measurements of small articles with reliable fixing. Adjustable altitude of installation. Provides stable force, perpendicularity to a measured surface, the smooth loading of the probe (sensing transducer) and expels possibility of its oscillations and movements on an article surface. We urgently recommend to use a sup- port for measurement of products and articles with thickness of a wall less than 2 mm.

Grinding adhesive greasing. The dynamic probe (sensing transducer): for placing of hardness blocks and small weight articles to the surface plate (GOST 10905-86). The Ultrasonic probe: for placing of products thinner than 1 mm on the support bedplate.

The grinding machine on batteries – for preparation of a zone of measurement on a surface of a controllable product, decrease of roughness, de-scaling, removing of rust, corrosion, riveting work and machining of welded joints.

Complete set of replaceable nozzles and caps to the ultrasonic probe (sensing transducer)

U1 – for conducting of measurements of articles of cylindrical and spherical form. Conductor.

The short ultrasonic probe U1, the short dynamic probe D1 – for conducting of measurements in the constrained conditions of the restricted space (measurement in pipes, sleeves, spigots etc.)

The hardness tester complete set of equipment



- 1 – Carry bag,
- 2 – Probes,
- 3 – Operation manual,
- 4 – Electronic module,
- 5 – Power module,
- 6 – Cable USB,
- 7 – CD with software

**7 DESIGN AND OPERATION PRINCIPLES**

Hardness tester is a small-sized instrument designed to measure hardness. It consists of an electronic module connected with a probe. The choice between ultrasonic and dynamic probe is made depending on mass, configuration, structure, degree of mechanical and thermal of treatment of a tested article.

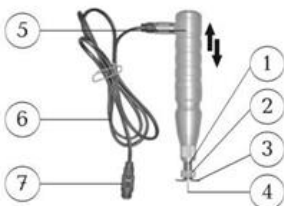
Combined portable hardness tester



- 1 – Electronic module
- 2 – U1 ultrasonic probe
- 3 – D1 dynamic probe

Measurement result does not depend on the electronic module and probe spatial position. Ultrasonic probe (ultrasonic contact impedance method – UCI) is a separate device connected with electronic module by cable. Ultrasonic and dynamic probes differ in size only.

**U1 Ultrasonic probe**



- Sleeve
- Packing fitting
- Packing lower surface
- Sleeve face
- 5 – probe body
- Connective cable
- Electronic module male connector

The probe basic part is a steel rod with Vickers diamond pyramid at the tip (the angle between the facets is 136°), which as an acoustic resonator (vibrator) of the in-built ultrasonic frequency self-excited oscillator. When the pyramid is forced on to the tested article under the calibrated spring fixed load, the resonator natural frequency depending on the hardness of metal changes.

The oscillator natural frequency relative change is transformed by the electronic module into the hardness number of the selected scale and is then shown on the display.

This method is suitable for hardness testing of articles with different mass and thickness and, especially, of articles with thin walls and small mass.

The design of ultrasonic probe makes it possible to conduct testing without any visible imprints the surface in hard-to-reach places (for example, gear teeth etc.), of thin articles (for example, pipelines etc.), where it is impossible to conduct measurements by dynamic probe.

It should be taken into account that the result of the testing conducted by ultrasonic method depends on E - elasticity modulus of the tested article.

**Limitation: it is not allowed to test articles with coarse-grain structure (for example, iron) and articles with mass less than 10 kilo or thickness less than 1 mm!**



Dynamic probe (rebound method) is a device connected with electronic module by cable. D1 dynamic probe and D1/2 short dynamic probe differ in size and spring retracting principle.

D1 dynamic probe

1. start button
2. the probe body upper part
3. the probe body lower part
4. inductor
5. hammer
6. probe connector plug
7. electronic module male connector

Hardness testing principle is based on the determination of the ratio of the stroke and rebound speed of the hammer which is located inside the probe. At the end of the hammer, there is a hard metal ball which contacts directly with the tested surface at the moment of the stroke. Inside the hammer, there is a permanent magnet. After pushing the start button and with the help of the preliminary taken up spring, the hammer is forced on to the tested surface. During this process, the hammer is moving inside the inductor and induces its own electro-motive force. The signal from the inductor outlet is sent to the electronic module inlet where it is transformed into the hardness number of the selected scale and is then shown on the display. Hardness testing is carried out in compliance with ASTM A965-02 "Standard Test Method for Leeb Hardness Testing of Steel Products". **This method is suitable for hardness testing of massive articles, coarse-grain articles and cast and forged pieces.**

The probe design enables to conduct a large number of tests over a unit of time, and to operate it does not require any special skills as, for example, in case of ultrasonic probe.

**Limitation: it is not allowed to test articles with the mass less than 3 kilo or thickness less than 12 mm!**

Testing of articles with mass less than 3 kg and thickness less than 12 mm is possible if:

Cast iron testing plate (GOST 10905-86) or certified metal plate with the mass not less than 5 kg is available;

Lapping liquid for the tested article lapping to the support plate is available;

The tested article shall be lapped to the support plate TIGHTLY.

When testing of magnetized materials is carried out, the error may increase due to the steel magnetic field impact on the readings of the hammer movement inside the inductance coil speed.

Hardness tester electronic module is a separate device in a plastic or aluminum body:

On the front side of the module there are:

- 1 LCD (hereinafter referred to as the "display");
- 2 4 functional push buttons ft, ft, <=>, <=>,
- 3 hardness tester type indication.

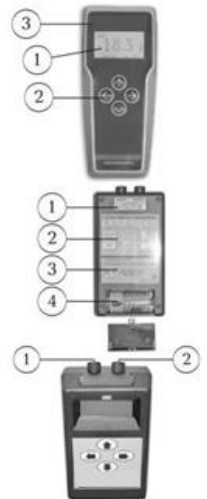
On the back side of the module there are:

- 1 serial number,
- 2 hardness tester operational diagram,
- 3 manufacturer's data,
- 4 closed accumulator (storage battery) section.

On the upper end of electronic module there are:

- 1 – four-pin socket for power supply or computer connection,
- 2 – five-pin socket for probe connection.

On the electronic probe back side, there is hardness tester operation diagram



Menu is used for hardness tester operation control. Every level of the menu allows the selection of parameters or modes of operation.

The first level – "scale" – allows to choose the current (operational) hardness scale from the following: HRC, HB, HV, HSD, Rm, H1, H2 or H3 and also other scales as it is ordered.

The second level - "measurement-calibration-processing" - allows to select the current (operational) hardness tester mode: measurement, calibration or processing.

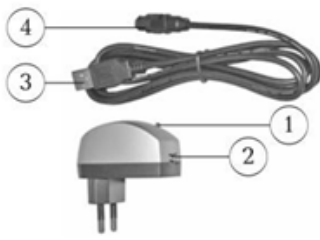
The third level – "YES/NO" allows to confirm or cancel the selected operation and get back to the former operations by pushing ft button.

Push buttons ft and ft allow to choose the menu level, and push buttons <=> and <=> allow to select a parameter within the level.

Cyclic menu allows the operator to roll the parameters circling inside the level by pressing button ft or ft.

The battery located in the closed compartment from the electronic module back side is the source of the hardness tester power supply. Battery should be installed in compliance with given polarity. If hardness tester is not in operation for more than fourteen days, the battery should be taken out from the electronic module compartment. The battery charge indication is shown under "battery" symbol in the electronic probe display upper part. Three dark squares inside the symbol show the battery full charge. As the battery discharges, the squares disappear one by one from top to bottom. One dark square or absence of any square means the necessity to charge the battery. "Battery" symbol is shown on the display under any hardness tester mode of operation.

Battery can be charged from AC mains through a charger



Power supply block:

- red light-emitting diode indicator of presence of power supply in a circuit,
- Socket for connection of USB plug of power supply,
- USB plug of a power supply connecting cable,
- Four-pin plug of a connecting cable for connection to electronic module.

It is allowed to charge the battery simultaneously and work with the hardness tester gauge.

It is forbidden to connect the charger to the electronic module without the accumulator battery!

The charger is connected to the electronic module (with battery inside!) through connecting power supply cable. The four-pin plug of connecting cable is equipped with rotating cylindrical lock.



To connect the charger, make the following steps:

- Turn the lock **counterclockwise** up to the stop;
- **Bring the plug** of the charger into coincidence with the electronic module plug so that they coincide;
- Insert the plug up to the stop by pushing slightly;
- Turn the lock **clockwise** up to the stop.

A specific flick of the lock confirms that the operation was done correctly. The charger is connected to the electronic module. Plug in the USB connective cable. The charger is switched to the electronic module. Connect the charger to the AC mains. When the power is on, the optical diode will be red. The battery charging process has started.

After the charger has been connected to the AC mains, the “**battery**” symbol squares on the switched on hardness tester display will get one by one darker from bottom to top.

It means that the battery charging has begun. In the process of charging, the battery and the charger case may get slightly warm which is not a defect.



The battery can be charged via USB port. To charge hardness test (with the installed battery) via USB port, first connect a four-pin plug to the hardness tester electronic module and after that USB port plug to the computer. The battery charging process has started. Hardness tester itself shall be switched off.

Hardness tester NiMh battery does not contain any heavy metals harmful for health. Nevertheless, for environmental protection purpose, do not throw used batteries away to the household rubbish container. You may send it back to the manufacturer or utilize in compliance with the rules for used batteries utilization.

## **8 OPERATION PROCEDURE**

### **8.1 Preparing for operation.**

### **8.2 VISUAL INSPECTION**

Make visual inspection of the device, make sure that there is no mechanical damage of the electronic probe, connective cable. Check the integrity of the seals on the electronic module (in the battery compartment) and the probe.

### **8.3 TESTED ARTICLE PREPARATION**

The mandatory requirement for conducting correct article hardness testing is to ensure appropriate conditions of article itself and especially its surface layer.

The mandatory requirements to the tested article:

- During the testing period, the tested article shall be under no load from the main operational loads.
- The roughness and radius of curvature of the tested surface shall correspond
- The area of the tested surface shall be free from humidity or contamination (oil, dust etc.), lubricants, scale, oxide film, rust.
- The distance between the supposed center of the tested area and the edge of the tested article surface or the next imprint shall not be less than 3, 5 of the diameter (length of diagonal) of the imprint
- In case there is a decarburized layer, surface hardening or nitration case within the tested area, this surface layer shall be removed (only for U1 ultrasonic probe).

To prepare the area of the tested surface it is recommended to use grinder or polishing paper, after that it is necessary to clean the area with a cleaning cloth. In the course of the surface preparation procedure it is necessary to take the precaution measures against the possible change in the hardness of the tested article due to heating or hardening of the tested surface in the process of the mechanical treatment.

The recommended depth of the layer to be removed:

- Cast articles surface: up to fine metal
- Forged or drop forged surface up to fine metal
- Tubing: up to fine metal

## **9 PROBE CONNECTION**

Probe shall be connected to the electronic module by a connective cable. The connective cable- connection to:

The battery can be charged via USB port. To charge hardness test (**with the installed battery**) via USB port, first connect a four-pin plug to the hardness tester electronic module and after that USB port plug to the computer. The battery charging process has started. Hardness tester itself shall be switched off.

Hardness tester NiMh battery does not contain any heavy metals harmful for health. Nevertheless, for environmental protection purpose, do not throw used batteries away to the- household rubbish container. You may send it back to the manufacturer or utilize in compliance with the rules for used batteries utilization.

## **10 OPERATION PROCEDURE**

### **10.1 Preparing for operation**

### **10.2 VISUAL INSPECTION**

Make visual inspection of the device, make sure that there is no mechanical damage of the electronic probe, connective cable. Check the integrity of the seals on the electronic module (in the battery compartment) and the probe.

#### **10.2.1 TESTED ARTICLE PREPARATION**

The mandatory requirement for conducting correct article hardness testing is to ensure appropriate conditions of article itself and especially its surface layer.

The mandatory requirements to the tested article:

During the testing period, the tested article shall be under no load from the main operational loads.

The roughness and radius of curvature of the tested surface shall correspond to the parameters

The area of the tested surface shall be free from humidity or contamination (oil, dust etc.), lubricants, scale, oxide film, rust.

The distance between the supposed center of the tested area and the edge of the tested article surface or the next imprint shall not be less than 3, 5 of the diameter (length of diagonal) of the imprint

In case there is a decarburized layer, surface hardening or nitration case within the tested area, this surface layer shall be removed (only for U1 ultrasonic probe).

To prepare the area of the tested surface it is recommended to use grinder or polishing paper, after that it is necessary to clean the area with a cleaning cloth. In the course of the surface preparation procedure it is necessary to take the precaution measures against the possible change in the hardness of the tested article due to heating or hardening of the tested surface in the process of the mechanical treatment.

The recommended depth of the layer to be removed:

- Cast articles surface: up to fine metal
- Forged or drop forged surface up to fine metal
- Tubing: up to fine metal

## **10.2.2 PROBE CONNECTION**

Probe shall be connected to the electronic module by a connective cable. The connective cable- connection to:  
U1 ultrasonic probe: plug the cable into the probe connector hole and move it as far as it will go, after that tighten the metal fixing device;

D1 dynamic probe: plug into the inductor connector hole as far as it will go (in some models, there is no such connector hole)

Probe with the connective cable is connected to the electronic module through five-pin plug equipped with a rotating cylindrical lock. To connect the probe, make the following steps:

Turn the lock counterclockwise up to the stop;

Bring the five-pin probe plug into coincidence with the electronic module plug so that they coincide;

Insert the plug up to the stop by pushing slightly;

Turn the lock clockwise up to the stop.

A specific flick of the lock confirms that the operation was done correctly. The probe is connected to the electronic module.

The probe is switched off in reverse sequence.

Attention! During work the Probes should be connected and replaced only when the tester is switched off!

## **10.3 POWER UP**

Press ft button for some time (-2 sec);

After switching for a short time the words “probe connection” will appear for a short time (-2 sec);

Electronic module will recognize the type of the connected probe and the relevant words, either “ultrasonic probe” or “dynamic probe” will appear on the display (-2 sec);

After these steps, hardness tester will automatically start operation in the mode which was used before it was switched off.

## **10.4 POWER DOWN**

Power supply switching off takes place automatically without any operation with push buttons or probe (-150 sec);

It takes place if and i=>; buttons are pushed simultaneously;

It takes place in case the battery is discharged;

## **10.5 DISPLAY LIGHTING**

Display lighting is switched on and off by short-time (-1 sec) pushing ft button from the menu first level (scale).

Hardness tester operation under the negative ambient temperature (<0C) shall be with the lighting on.

Operation with display lighting reduces the time of the device operation since the battery charges faster!

# **11 OPERATION WITH ELECTRONIC MODULE**

## **11.1 BEGINNING OF WORK**

### **11.2 SCALE SELECTION**

Start work with the first level – “scale” – by pushing ft button. In the display upperpart, words “XXX scale” will appear, where “XXX” is a hardness scale, and in the display right side, “battery” symbol will appear.

Select the hardness scale you need by pushing and => buttons.

U1 ultrasonic probe: plug the cable into the probe connector hole and move it as far as it will go, after that tighten the metal fixing device;

D1 dynamic probe: plug into the inductor connector hole as far as it will go (in some models, there is no such connector hole)

Probe with the connective cable is connected to the electronic module through five-pin plug

Equipped with a rotating cylindrical lock. To connect the probe, make the following steps:

Turn the lock counterclockwise up to the stop;

Bring the five-pin probe plug into coincidence with the electronic module plug so that they coincide;

Insert the plug up to the stop by pushing slightly;

Turn the lock clockwise up to the stop.

A specific flick of the lock confirms that the operation was done correctly. The probe is connected to the electronic module.

The probe is switched off in reverse sequence.

Attention! During work the Probes should be connected and replaced only when the tester is switched off!

### 11.3 POWER UP

Press ft button for some time (-2 sec);

After switching for a short time the words “probe connection” will appear for a short time (-2 sec);

Electronic module will recognize the type of the connected probe and the relevant words, either “ultrasonic probe” or “dynamic probe” will appear on the display (-2 sec);

After these steps, hardness tester will automatically start operation in the mode which was used before it was switched off.

### 11.4 POWER DOWN

Power supply switching off takes place automatically without any operation with push buttons or probe (-150 sec);

It takes place if and i=>; buttons are pushed simultaneously;

It takes place in case the battery is discharged;

### 11.5 DISPLAY LIGHTING

Display lighting is switched on and off by short-time (-1 sec) pushing ft button from the menu first level (scale).

Hardness tester operation under the negative ambient temperature (<0C) shall be with the lighting on.

Operation with display lighting reduces the time of the device operation since the battery charges faster!

## 12 OPERATION WITH ELECTRONIC MODULE

### 12.1 BEGINNING OF WORK

#### 12.2 SCALE SELECTION

Start work with the first level – “scale” – by pushing ft button. In the display upper part, words “XXX scale” will appear, where “XXX” is a hardness scale, and in the display right side, “battery” symbol will appear

Select the hardness scale you need by pushing and => buttons.

Confirm the selection of the required for you hardness scale by pushing U- button. After that you will get to the second level automatically.

#### 12.2.1 OPERATING MODE SELECTION

Select the required for you operation mode – “measurement” or “calibration”, or “processing” by pushing or buttons.

Confirm the necessary mode by pushing 0-button. The hardness tester is ready for operation.

#### 12.2.2 OPERATION CANCELING

To cancel an operation or to return to the previous one use ft button.

#### 12.2.3 “TESTING” MODE

“Measurement” mode and all operations within this mode shall be conducted separately for U1 ultrasonic probe and D1 dynamic probe. The given below operations can be performed in this mode:

Archive testing and recording

#### 12.2.4 “ARCHIVE” OPERATION

Hardness tester operation in “measurement” mode always starts with the “Archive” operation. Indication on the display is shown on the figure below.

Vickers hardness scale the measured value on Vickers scale



Operating mode

the number of the archive cell

**Attention! During the first operation it is recommended to skip the “archive” operation and proceed with “measurement and recording” operation. For this purpose, push ↵ button.**

The meaning of words and symbols on the display

“HV” - Vickers hardness scale;

“838” - the measured value on Vickers scale;

“Archive №63” - the number of the archive cell in which measurement #838 on Vickers scale (HV) is stored;

“Battery” - is battery charge symbol.

Archive cell number changing

The change of the archive cell number is done by pushing <=> or => buttons. The change of the archive cell number (Archive JNb63) will result in the change of the readings of the measured value

(838) into the readings of another measured value saved under the relevant archive number (№61; 63; 60, 64 etc.).

The hardness scale (HV), however, will remain unchanged.

It means that if you conducted your measurement on HRC scale and sent it to the archive under №3 and №4, and the archive is looked through from HV-838-Archive №63, the hardness tester will automatically transfer HRC and HB hardness scales into HV scale and will show the values of cells JVoJSfel, 2, 3 and 4 on HV scale.

### 12.2.5 Conversion of the measured value from one hardness scale into another

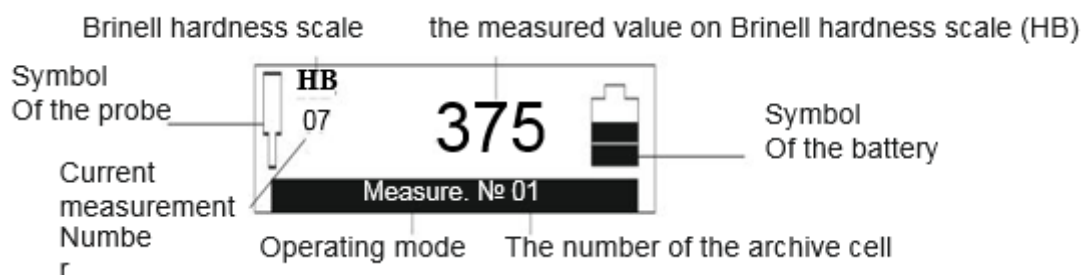
- select the scale you need
- turn to “archive” operation
- By pushing <=> or >=> buttons, look through the archive;
- All values obtained earlier in other hardness scales will be automatically converted into the selected by you scale.

Attention! Conversion from one hardness into another has an error.

To process data in the archive, (mean value computing and archive clearing) switch to “processing” mode

### 13 “MEASUREMENT AND RECORDING” OPERATION

Start “measurement and recording” operation by pushing 4 button in order to finish and go out of the “archive” operation. Indication on the display is shown on the figure below.



#### The meaning of words and symbols on the display

“HB” Brinell hardness scale;

“07” current measurement number

“375” the measured value on Brinell hardness scale (HB);

“Measurement №01” the number of the archive cell which is offered for recording of the measured value on Brinell hardness scale (HB);

“Probe” symbol of the probe;

“Battery” symbol of the battery.

Blinking probe symbol means that the hardness tester is ready for conducting of measurements. How to use the probe in the process of “measurement and archive” operation is described after the sound signal, the measured on the selected by you hardness scale value appears on the display.). The measurement number (07) and the measured value (375) on the hardness scale (HB) correspond to every conducted measurement. The archive cell number (**measure №01**) remains unchanged.

Conducted measurements mean value is computed by pushing 4 button. The number of measurements which are taken for the mean value calculation is shown in the current measurement number (07), i.e. having conducted 7 measurements and by pushing button, you will obtain the mean value. After the mean value computation, the hardness tester will automatically start the “archive” operation for you to save the obtained result. If you do not want to save the result and want to continue your measurement, push 4 button to switch to “measurement and recording” operation. Deleting measurement hardness value (375) within the “measurement and recording” operation is made by <= button pushing. It is recommended to delete the last measurement result in case there appear some doubts in the correct measurement procedure.

Recording in the archive shall be started from selecting the cell number and “archive” operation, after that go to “measurement and archive” operation by pushing ↓ button. to set -00- in the current measurement (07), transition from “measurement and recording “operation to “archive” and back by pushing 4 button two times shall be performed; Recording the measured hardness value (375) or mean value into the archive is done by >=> button pushing. In doing so, the number of the archive cell for measurement recording (measure N°01) will be automatically increased by 1 (measure JV°2).

It is recommended to set “00” in the current measurement number for every new set of measurements.

Recording into the archive of the measured hardness number (375) or mean value shall be made by pushing 4 button. In this case, the number of the archive cell for measurement recording (measure N° 1) will remain unchanged. This is convenient for changing the archive cell content.

### 13.1 “CALIBRATION” MODE

Shall be carried out by highly skilled personnel only and only in the case of production necessity.

It is not allowed to use reference hardness blocks the shelf life of which has expired (2 years from the last comparison) or the surface of which was used by more than half (GOST 9031-75)

“Calibration” mode and all operations under this mode shall be performed separately for U1 ultrasonic probe and D1 dynamic probe. It is recommended to perform hardness tester operation in “calibration” mode when not less than two squares of the battery charge indication are on.

The process of hardness tester calibration by users means bringing mean hardness value of a reference hardness block measured by the hardness tester into the line (equality) with its nominal value (engraved on one of its sides in compliance with GOST 9032-75). Hardness tester calibration by users on HRC, HB, HV, HSD scales allows to introduce a± correction to hardness tester calibration established by the manufacturer straight after the hardness tester had been manufactured. Calibration makes it possible to restore the accuracy of hardness tester readings under the condition of the possible wear and tear of the probe mechanical parts (spring, hammer) in the process of long and intensive operation.

It is recommended to perform hardness tester calibration by users in the period between verifications in the listed below cases:

If in the process of the hardness tester verification on the reference hardness block the readings are stable but differ from the nominal value of the reference hardness block;

After long period of storage (more than 3 months);

After intensive operation (more than 200.000 measurements for U1 ultrasonic probe and 50.000 for D1 dynamic probe);

In case of considerable change in the conditions of operation (ambient temperature, humidity etc.)

For hardness tester calibration by user, it is necessary to have two reference hardness- blocks with maximum and minimum values on the controlled part of the hardness scale.

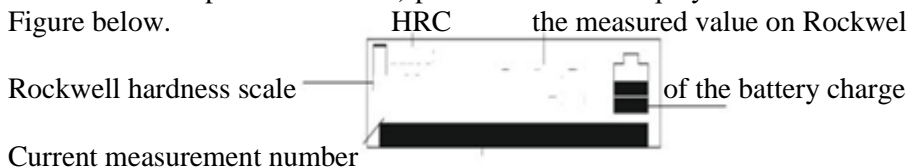
### 13.2 Examples

- For calibration along the whole “C” Rockwell scale, TWO reference hardness blocks are required with the values of (25±5) HRC and (65±5) HRC.

- If you do not use the whole range of “C” Rockwell but only the range of 20±40 HRC, perform the calibration on reference hardness blocks with the values of (25±5) HRC and (45±5) HRC.

### 13.3 CALIBRATION OPERATION

Select the scale and enter into “Calibration” mode. Enter the code (it is in the sealed envelope inside the Technical Reference and Operation Manual) push button. The display indication in the “Calibration” mode is shown on the Figure below.



Calibration number

Operating mode

**64,2**

symbol

blinking symbol

The meaning of words and symbols on the display

“HRC” Rockwell hardness scale;

“02” current measurement number

“64,2” the measured value on Rockwell hardness scale (HRC);

“Calibrat.2” calibration number;

“Probe” blinking symbol;

“Battery” symbol of the battery charge.

Measurements on reference hardness block №1 (step 1)

– obtaining of mean hardness number. Take one reference hardness block. Conduct not less than FIVE measurements!

Average the obtained values by pushing button. Confirm the end of this step by pushing .button.

**Correction (step 2)** – bring into the line (equality) the measured by the hardness tester MEAN and NOMINAL hardness value. By pushing or => buttons change the MEAN value of the hardness tester up to the NOMINAL value on the hardness reference block. When the values coincide (become equal), push ↓ button.

### Measurement on reference hardness block 2 (step3)

**Correction (step 4)** Pushing button will lead to the completion of the step and going out from “Calibration” mode. Verification of the hardness tester readings after the conducted calibration.

Measure the hardness of reference hardness block №1 (not less than 5 measurements) and compute its mean value the obtained value shall correspond to its nominal value within the hardness tester error

If the obtained value exceeds the hardness tester error limit, then perform “CLEAR CALIBRATION” function and repeat “CALIBRATION” operation

## 13.4 CLEAR CALIBRATION OPERATION

Hardness tester calibration by users requires highly skilled professional personnel. If you failed to introduce the correction to the hardness tester calibration for the second time or if you doubt the results of the conducted “Calibration” operation, it is recommended to perform “Clear cal.” operation. To obtain technical support, keep in touch with the maintenance service of the hardness tester manufacturer.

To clear calibration correction introduced independently, perform the following steps:

- select the scale
- enter “Calibration” mode
- enter the code;
- push => button.

After performing “Clear cal.” operation the hardness tester will get to the initial hardness tester calibration set by the manufacturer straight after manufacturing or it needs recalibrating.

## 13.5 PROCESSING MODE

“Processing” mode and all operations within this mode shall be conducted separately for U1 ultrasonic probe and D1 dynamic probe.

Within this mode the listed below operations can be carried out:

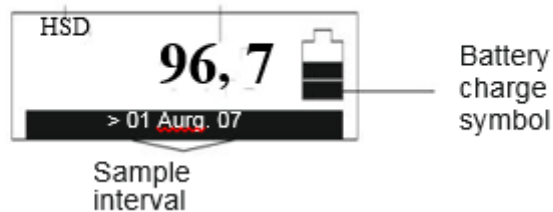
- compute mean value;
- clear archive.

Select the scale. Enter the “processing” mode (sequence of buttons is:4; <=>; 4). Select the necessary for you operation by <=> or button and confirm your selection by pushing 4 (yes).

## 13.6 MEAN VALUE OPERATION

“Mean value” operation is used for mean value computation within any interval of the archive cell (sample interval). Display indication is shown on the Figure below

Shore hardness scale mean hardness value on Shore scale



The meaning of words and symbols on the display.

“HSD” Shore hardness scale;

“96,7” mean hardness value on Shore scale (HSD); o “>01 mean 07” sample interval;

“battery” battery charge symbol.

The display shows the result of the hardness mean value (96,7) on Shore scale (HSD) for the archive cells from number one through number seven (<01 mean 07)

Setting the limits for sample mean value computation:

Push 4 button to move < or > sign to the left initial (>01) or the last right

Limit; (<07) sample

Every push of <=> or <=> button will decrease or increase the left (>01) and the right (<07) number of the sample

limits by one; the sample mean value is computed and shown on the display automatically (“96, 7”)“Mean val.”

operation does not change the archive cells content. “Mean val.” operation is performed only for filled in cells within the sample limits.



### 13.7 CLEAR ARCHIVE OPERATION

“Clear archive” operation is designed for deleting from the hardness tester memory ALL content of the archive cells, i.e. reducing to zero of ALL data.

In the “Processing” operation mode, select “clear archive” operation by pushing <=> or >=> button. Push H (yes) button. The words “Please, wait, clear archive” will appear and in two seconds the archive will be deleted.

#### 13.7.1 CONNECTION WITH COMPUTER

The function is for data transfer from hardness tester non-volatile memory to the computer for the purpose of saving, processing, looking through and selection from the general volume what is necessary for graphs preparation and the further printing out of the results.

Hardness tester soft-ware is suitable for WINDOWS.

#### 13.7.2 Operation procedure

Connect the power and data transfer cable to hardness tester electronic module through four-pin plug and to the switched on computer via USP port. It is not required to switch the hardness tester on.

Insert the attached CD into the computer.

Install USB driver from “Install DRVMET” file in compliance with the “Instructions for USB driver installation”.

Install “MET hardness tester” software going to “Install MET” file and double clicking on “SETUP\_EXE\_EXE” file.

Operate “MET hardness tester” software going to “All software” in the start menu on your computer.

In the opened window, of “MET hardness tester” soft-ware, push “Help” button and set the operation of the computer with the hardness tester in compliance with “Inquiry “section.

When hardness tester is connected to the switched on computer via USB port, the battery charging takes place.

### 14 OPERATION WITH PROBE (sensing transducer)

#### 14.1 U1 ULTRASONIC PROBE

Check if the probe packing for (yellow color, hereinafter referred to as the “packing”) is installed correctly: the end face of the probe sleeve shall coincide with the packing lower surface. If the end face is deepened into the sleeve or sticks out, it shall be reinstalled. For this purpose, unscrew the packing ft ring, match the packing lower surface with and the sleeve end face in one surface, screw the sleeve ft ring.

Check whether the sleeve has been installed properly before the measurement starts!

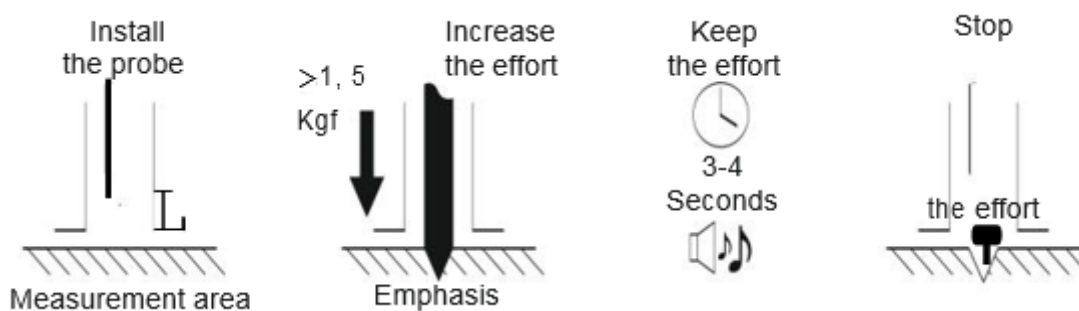
Fulfill the requirements to the tested article, connect the probe to the electronic module, switch on the hardness tester power supply and turn to the “measurement” duty.

Ultrasonic probe is extremely sensitive, that is why to operate it, the user should have special skills and habits. In the process of testing, the article shall be fixed and the probe shall be installed perpendicular to the measurement area. To avoid any damage to the diamond pyramid, do not install and move the probe sharply along the tested surface. After pushing on the probe, it is **PROHIBITED** to move it along the article surface!

To avoid wrong actions in the process of testing and to ensure reliable fixing, it is recommended to use additional accessories to U1 ultrasonic probe: holder, lapping fluid, replaceable attachments for cylindrical and spherical surfaces

### 15 THE FIRST MEASUREMENT

Loading diagram for U1 ultrasonic hardness probe



Install the probe increase the effort keep the effort stop the effort

**Install the probe** with its packing lower surface to the measurement area of the tested article. Press the packing with two fingers of one hand to the measurement area and keep it stable in the process of measurement. Take the body of the probe in the other hand.

**Press into** the probe body slightly until the first resistance – diamond pyramid of the rod- comes up against the surface. Increase the effort immediately until the second resistance (stop)

– The diamond pyramid is forced into the surface. The effort should be made **smoothly**\*. Be sure that your hand does not shake so that the probe body is stable. For the probe correct operation, it is necessary to apply an effort of not less than 14, 7 N (1, 5 kgf) to its body and keep it stable in the process of measurement. Do not be afraid to apply an excessive effort to the probe body, it will be limited by the stop.

Blinking of “probe” symbol on the display means that the hardness tester is ready to conduct measurements.

Operate “MET hardness tester” software going to “All software” in the start menu on your computer.

In the opened window, of “MET hardness tester” soft-ware, push “Help” button and set the operation of the computer

with the hardness tester in compliance with “Inquiry” section.

Keep the constant effort on the probe body during 3-4 seconds. “Probe” symbol on the display will stop blinking.

- After the sound signal and appearance of the hardness value on the electronic probe display, stop making the effort on the probe body. The “probe” symbol on the display will start blinking again, and the probe body will under the spring effort return to the initial position.

The first measurement has been completed, and the hardness tester is ready for the next measurement.

\*In case of sharp pressing on to the probe body, diamond pyramid can hit the surface of the tested item, and due to this the measured hardness value will be incorrect.

## **15.1 EXPERIMENTAL MEASUREMENT**

It is advisable to consider the first measurement as experimental measurement. In order to acquire some experience of how to use the probe, it is recommended to conduct a number of experimental measurements.

- After experimental measurement conducting, push button to delete the result and exclude it from the article mean hardness value computation

- After a number of experimental measurements has been conducted for the purpose of acquiring some experience of using the probe, you may use “Clear archive” function to delete the results of the experimental measurements

### **15.1.1 ACQUIRING SOME EXPERIENCE OF WORKING WITH THE PROBE**

To acquire experience of working with the probe, it is recommended to use reference hardness blocks. Measure the hardness of a reference hardness block (not less than 5 measurements) and compute its mean value. If the obtained value does not correspond to the number of the reference hardness block, conduct one more measurement.

If the hardness tester readings are stable and the obtained mean value corresponds to the reference hardness block rated value considering the hardness tester error you may further proceed with the hardness tester.

The rules of U1/2 short probe operation are similar to those for U1 ultrasonic probe. Holders for U1/2 are not produced.

### **15.1.2 D1 DYNAMIC PROBE**

Be sure that the requirements to the tested article are observed, connect the probe to the electronic module switch the power supply on and turn to the “measurement” mode.

In the process of measurement, the article shall be fixed and the probe shall be fixed perpendicular! To the measurement area. At the moment of start button pushing, IT IS NOT ALLOWED to move the probe along the tester surface.

### **15.1.3 THE FIRST MEASUREMENT**

- Blinking of “probe” symbol on the display means that the hardness tester is ready to conduct measurements.

- Install the probe to the article measurement area. With your one hand hold the inductor (the probe lower body), with the other hand, hold the probe upper body. The upper probe body shall be then moved to the lower body up to the stop and then set it free. The spring is taken up and the probe upper part returns to the initial position independently.

- Press the launch button in the probe body upper part smoothly. Be sure that the probe does not move and is properly pressed to the measurement area.

- After pushing the launch button and the hammer stroke at the measurement area, there will be a sound signal after which the indication of the measured hardness value will appear on the electronic module display.

### **15.1.4 EXPERIMENTAL MEASUREMENT**

It is advisable to consider the first measurement as experimental measurement. In order to acquire some experience of how to use the probe, it is recommended to conduct a number of experimental measurements.

- After experimental measurement conducting, push ⇐ button to delete the result and exclude it from the article mean hardness value computation

- After a number of experimental measurements has been conducted for the purpose of acquiring some experience of using the probe, you may use “Clear archive” function to delete the results of the experimental measurements.

Attention! The minimum distance between the measurement points (imprints) shall be not less than 3 mm. Repeated measurements in one and the same point are not admissible since it results in the increased hardness value indication due to the metal hammering harden in the imprint area.

- After experimental measurement conducting, push button to delete the result and exclude it from the article mean hardness value computation

- After a number of experimental measurements has been conducted for the purpose of acquiring some experience of using the probe, you may use “Clear archive” function to delete the results of the experimental measurements

### **15.1.5 ACQUIRING SOME EXPERIENCE OF WORKING WITH THE PROBE**

To acquire experience of working with the probe, it is recommended to use reference hardness blocks. Measure the hardness of a reference hardness block (not less than 5 measurements) and compute its mean value. If the obtained value does not correspond to the number of the reference hardness block, conduct one more measurement.

If the hardness tester readings are stable and the obtained mean value corresponds to the reference hardness block rated value considering the hardness tester error, you may further proceed with the hardness tester.

The rules of U1/2 short probe operation are similar to those for U1 ultrasonic probe. Holders for U1/2 are not produced.

## **15.2 D1 DYNAMIC PROBE**

Be sure that the requirements to the tested article are observed, connect the probe to the electronic module, switch the power supply on and turn to the “measurement” mode

In the process of measurement, the article shall be fixed and the probe shall be fixed perpendicular! To the measurement area. At the moment of start button pushing, IT IS NOT ALLOWED to move the probe along the tester surface.

### **15.3 THE FIRST MEASUREMENT**

- Blinking of “probe” symbol on the display means that the hardness tester is ready to conduct measurements.
- Install the probe to the article measurement area. With your one hand hold the inductor (the probe lower body), with the other hand, hold the probe upper body. The upper probe body shall be then moved to the lower body up to the stop and then set it free. The spring is taken up and the probe upper part returns to the initial position independently.
- Press the launch button in the probe body upper part smoothly. Be sure that the probe does not move and is properly pressed to the measurement area.
- After pushing the launch button and the hammer stroke at the measurement area, there will be a sound signal after which the indication of the measured hardness value will appear on the electronic module display.

### **15.4 EXPERIMENTAL MEASUREMENT**

It is advisable to consider the first measurement as experimental measurement. In order to acquire some experience of how to use the probe, it is recommended to conduct a number of experimental measurements.

- After experimental measurement conducting, push ⇐button to delete the result and exclude it from the article mean hardness value computation
  - After a number of experimental measurements has been conducted for the purpose of acquiring some experience of using the probe, you may use “Clear archive” function to delete the results of the experimental measurements
- Attention! The minimum distance between the measurement points (imprints) shall be not less than 3 mm. Repeated measurements in one and the same point are not admissible since it results in the increased hardness value indication due to the metal hammering harden in the imprint area

#### **15.4.1 ACQUIRING SOME EXPERIENCE OF WORKING WITH THE PROBE**

To acquire experience of working with the probe, it is recommended to use reference hardness blocks. Measure the hardness of a reference hardness block (not less than 5 measurements) and compute its mean value. If the obtained value does not correspond to the number of the reference hardness block, conduct one more measurement.

If the hardness tester readings are stable and the obtained mean value corresponds to the reference hardness block rated value considering the hardness tester error you may further proceed with the hardness tester.

The rules of D1/2 short probe operation are similar to those for D1 ultrasonic probe. The difference is only in the mechanism of spring taking up To take it up, it is necessary to use the metal rod attached to short probes with the help of which the hammer should be placed back into the probe till the stop.

## **16 TECHNICAL MAINTENANCE, SPECIAL CONDITIONS OF OPERATION**

On the whole, hardness testers do not require any special maintenance. However, for the purpose of hardness tester stable operation, regular maintenance is advisable.

### **16.1 PROBE MAINTENANCE**

Clean hard metal ball and diamond pyramid from dust, mud and oil traces. Use soft cloth impregnated with alcohol solution.

Check the probe operation regularly by conducting hardness measurements on hardness reference blocks. Do not use reference test block with expired period between verifications (more than 2 years).

### **16.2 ELECTRONIC MODULE MAINTENANCE**

To clean from any pollution, use soft dry cloth. Do not use water, since the hardness tester is neither spray-proof nor water-proof due to the joints on its body.

Do not use any solvents, they can damage indication signs and writings on the front and back sides of the body.

### **16.3 BATTERY MAINTENANCE**

The battery average life is not less than 3 years. The battery is used in compliance with the “C” or “AA” international standard. It is done for the convenience of its replacement when it is required or in case of sharp reduction of the continuous operation time independently of the country.

Replacement is possible only by the battery with similar characteristics in compliance with the marking on it. From environmental protection point of view, the best thing is to use the battery.

### **16.4 STORAGE**

Hardness tester shall be kept in the carry case, the probe and the battery shall be disconnected.

We recommend to keep Verification Certificate in the carry case inner pocket.

If hardness tester is kept in the carry case for than 14 days, the battery shall be taken out from its compartment in the electronic module.

It is recommended to keep hardness testers in closed premises with the relative humidity not more than 80%, there shall be no mold, paints, acids, chemical agents and other chemicals, the evaporation of which may give a harmful effect. Sharp fluctuations of temperature and humidity which can result in dew formation are not allowed.

It is recommended to keep hardness testers in the carry case in any spatial position not more than 5 pieces put on one another which is relevant to the load of 5 kg under the condition of its even distribution along the carry case surface.

### **16.5 TRANSPORTATION**

Hardness tester's transportation in the carry case shall be only in closed vehicles, where the possibility of mechanical damage or atmospheric precipitation is excluded.

The way packed in carry cases hardness testers are located inside the vehicle shall exclude the possibility of their free movement both inside the carry case and inside the vehicle.

### **16.6 PUTTING INTO OPERATION AFTER STORAGE AND TRANSPORTATION**

After storage or transportation under the temperature lower than  $-5^{\circ}\text{C}$ , before starting hardness tester operation, it is necessary to keep it no longer than 1 hour under the temperature higher than  $+10^{\circ}\text{C}$  and not less than 2 hours under the temperature higher than  $0^{\circ}\text{C}$ .

Before operating hardness tester which was stored for more than 3 months and transported for more than 2 months, it is necessary to check such hardness tester on the reference hardness test blocks. If the measured AVEARGED value of the hardness tester does not correspond to the reference hardness test block NOMINAL value within the error limits (it is necessary to calibrate the hardness tester

### **16.7 SPECIAL OPERATING CONDITIONS**

Increased dust content and humidity. Put the electronic module of hardness tester into a transparent plastic bag.

Tighten it at the level of connective cable a bit lower than the probe plug. After the work under such conditions is finished, electronic module shall take out of the plastic bag and air it.

Negative temperature ( $<0^{\circ}\text{C}$ ). Electronic module is the most sensitive to low temperature part of hardness testers, especially it is true for LCD. That is why it is mandatory to switch the display lighting on. If there is a possibility, keep hardness tester closer to your body and protect it with your coat or keep in the inside pocket, taking it out time from time for inputting the data into the archive.

### **17 PRECAUTIONS AND TROUBLESHOOTING**

Treat the hardness tester with care. Any wrong treatment may result in the violation of the present Technical Reference and Operation Manual regulations and, thus, lead to the manufacturer hardness tester warranty cessation. Always check the integrity of the cables, electronic module and probe. Provide immediate replacement of the damaged parts by the original ones. This job shall be performed by skilled personnel.

Do not expose the hardness tester to aggressive chemical medium.

Do not leave the hardness tester in the direct Sun.

Do not sink the hardness tester into any liquids. If the hardness tester gets wet, take the battery out and leave for 24 hours to get dry.

If the hardness tester is used under the increased humidity or dust conditions, place the electronic module into the plastic bag. After work period is over, it is mandatory to get the hardness tester dry.

The list of the possible problems in the process of hardness tester operation is given in the Table below

### **18 MANUFACTURER'S WARRANTY AND SERVICE MAINTENANCE**

Hardness tester warranty period is 12 months from the date of the hardness tester Acceptance Certificate issue (Annex 1). The warranty maintenance is done upon the warranty coupon presentation.

Hardness tester warranty period is considered to be expired in case the seal of the electronic module or probe is violated. The warranty does not cover hardness tester battery. In case your hardness tester does not work, the following steps shall be taken:

Use the information from the Table,

Contact the manufacturer warranty service for technical support (consultation)

Prepare technically grounded reclamation document and send it together with the hardness tester to the warranty service at the address:

Problem	Reason	Remedy	
Display does not switch on	the battery is discharged	Charge or replace	
	The battery is not installed	Reinstall, Observe the indicated polarity	
Readings on the display do not change	There is no contact in the connector of the probe with the electronic module	Contact the service center	
	Break in the connecting cable or connector; fault of the probe of electronic module	Check the connection reliability	
Display switched off in the process of measurement Probe blinking stopped in the “measurement” mode	Testing of articles which do not correspond to the hardness tester specifications, for example, low hardness of the article	Switch the hardness tester off After one minute switch the hardness tester on If the hardness tester does not switch on, take the battery out from its compartment in the electronic module. Install it back in two minutes and switch the hardness tester on. Carry out one measurement for checking purpose on the reference hardness test block	
Measurements results are stable but differ from reference hardness block nominal value	The spring of the probe has been worn out after long life	Calibrate the hardness tester independently on the reference hardness blocks	
	Reference hardness test block has expired inter verification period (more than 2 years)	Use suitable reference hardness test block	
Big range of the measurement results	The tested material has not uniform in its structure.	Increase the number of measurements	
	Tested area has not been prepared properly	Polish additionally	
	The diamond pyramid or hard metal ball are polluted.	Clean from the polluted pieces	
	The diamond pyramid tip or Hard metal ball are damaged	Contact the service center	
	D1 DYNAMIC PROBE		
	The probe is not enough pressed to the tested article	Conduct the repeated test correctly	
	The hardness reference block surface is covered by the imprints from the previous measurements block	Use new hardness reference	
	U1 ULTRASONIC PROBE		
	The packing on the probe body is displaced	Check if it was installed correctly	
	Too high hardness indications after the repeated use on the samples with big hardness	D1 DYNAMIC PROBE	
Hard metal ball deformation		Calibrate the hardness tester independently on the reference hardness blocks	
Too high hardness indications when hardness of cylinder shaped articles with surface hardening is measured Influence of the articles surface tensions Use U1 ultrasonic probe	Influence of the articles surface tensions	Use U1 ultrasonic probe	